

About Americatel

AMERICATEL is a history-making international telecommunications company that has developed a unique niche in the Americas. It is the first regional carrier dedicated to servicing the needs of multinational companies operating in the Latin American and Caribbean regions. Through an established network of strategic partners and affiliates in key markets, Americatel assures its clients the highest quality, cost-effective, end-to-end digital communications.

Americatel Corporation was formed in April, 1993 by ENTEL Chile, the largest long distance carrier in Chile and a pioneer in the privatization of Latin America's telecommunications industry. The company was founded upon the business premise that an explosion of trade and commerce in the Americas had created new requirements for voice and data communication services between companies and their distant divisions and customers in the region. A need had arisen for higher quality telecommunications services for businesses and in-country and intra-regional network solutions.

To meet this challenge, Americatel extended its reach in 1994, establishing alliances and joint ventures in Argentina, Colombia, Ecuador, El Salvador, Guatemala, Honduras, and Peru. These strategic partners include the region's principal private carriers and industry leaders, together comprising the Americatel/ENTEL Network. The Network continued its expansions in 1996 through a relationship with STET of Italy.

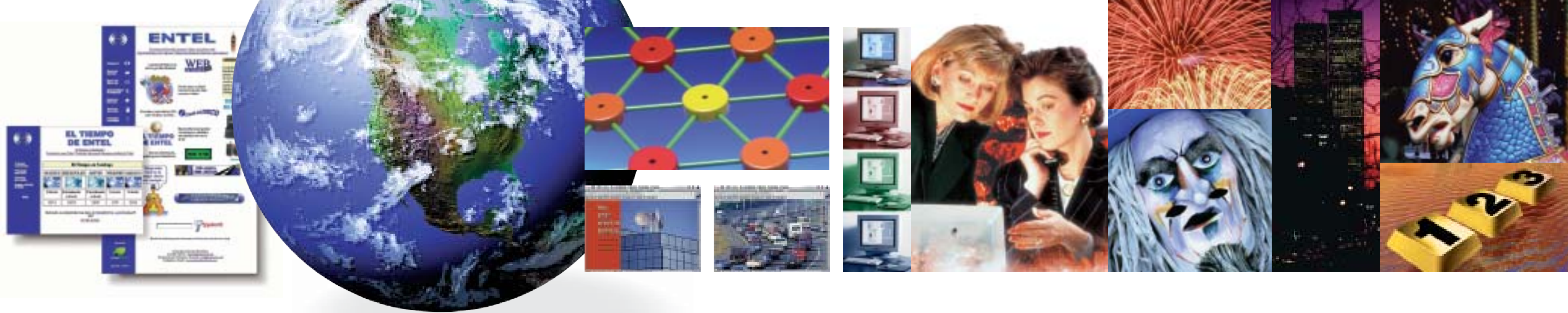
The commitment of Americatel and its affiliates to provide exceptional telecommunications solutions is second to none. The Americatel network has the strongest presence in Latin America, operating multiple hubs dedicated to the support of corporate network services within the region. Continuous efforts are being made to develop new services utilizing existing platforms and establishing commercial agreements with foreign telecommunications administrations to support new endeavors in the Americas.



Americatel[®]

Americatel Corporation
4045 NW 97 Avenue
Miami, Florida 33178 USA
(305) 716-8700 phone
(305) 994-7294 fax
www.americatel.net

**Wholesale
Internet**



Internet

AMERICATEL provides Internet backbone access to Internet Service Providers (ISPs) in Latin America and the Caribbean. We have an excellent service record and recognition in the area for a strong presence and dedication to foster growth of the Internet in the region.

Our current customer list includes a number of carriers and private ISPs who connect to our Internet backbone node at Americatel's teleport in Miami, Florida. The backbone node has dual access to the US Internet via two different providers at speeds of up to 45 Mbps. The Internet access is redundant, both physically and logically, and best route calculations are performed by our backbone router for maximum efficiency and excellent response time.



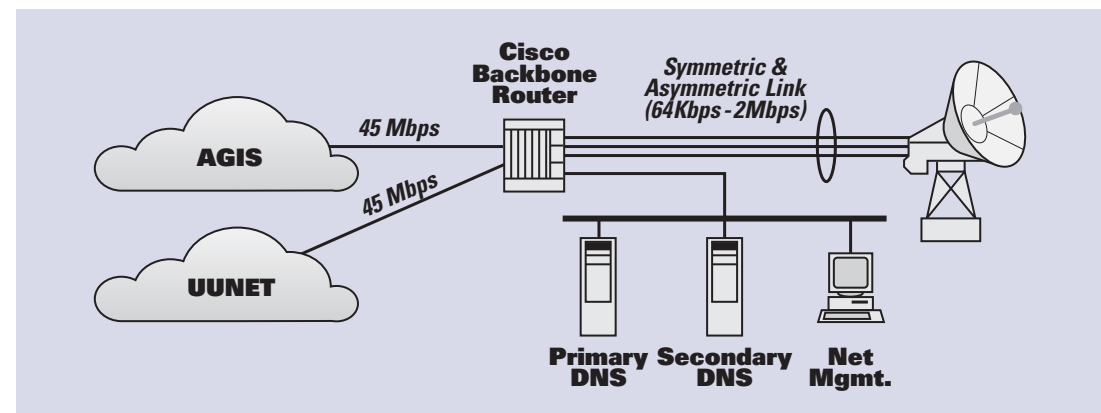
Americatel understands the competitive nature of the ISP business and the need to provide the best service in its market. With this in mind, our Internet node is designed to provide high service availability and performance. Americatel's technical assistance center is open 24 hours a day, seven days a week, including holidays. As a result, any unexpected problems which may arise are resolved at once, minimizing the impact on the ISP's customers.

Americatel's Internet services take full advantage

of the highly reliable Americatel private lines services to connect the ISPs to our Internet backbone node. The access speed ranges from 64 Kbps to 8 Mbps and higher, either in a full duplex, half duplex, or asymmetric fashion. Asymmetric connections are recommended in situations in which most of the traffic flows in one direction, so a full duplex circuit is not needed. This reduces the cost of bandwidth to the ISP and its overall operating costs be-

cause in most instances, bandwidth is the dominant cost in an ISP operation.

ISPs connecting to Americatel's backbone node enjoy direct routes to other Latin American and Caribbean countries. This results in improved service for intra-regional traffic and a major competitive advantage for regional ISPs.



Internet

