

About Americatel

AMERICATEL is a history-making international telecommunications company that has developed a unique niche in the Americas. It is the first regional carrier dedicated to servicing the needs of multinational companies operating in the Latin American and Caribbean regions. Through an established network of strategic partners and affiliates in key markets, Americatel assures its clients the highest quality, cost-effective, end-to-end digital communications.

Americatel Corporation was formed in April, 1993 by ENTEL Chile, the largest long distance carrier in Chile and a pioneer in the privatization of Latin America's telecommunications industry. The company was founded upon the business premise that an explosion of trade and commerce in the Americas had created new requirements for voice and data communication services between companies and their distant divisions and customers in the region. A need had arisen for higher quality telecommunications services for businesses and in-country and intra-regional network solutions.

To meet this challenge, Americatel extended its reach in 1994, establishing alliances and joint ventures in Argentina, Colombia, Ecuador, El Salvador, Guatemala, Honduras, and Peru. These strategic partners include the region's principal private carriers and industry leaders, together comprising the Americatel/ENTEL Network. The Network continued its expansions in 1996 through a relationship with STET of Italy.

The commitment of Americatel and its affiliates to provide exceptional telecommunications solutions is second to none. The Americatel network has the strongest presence in Latin America, operating multiple hubs dedicated to the support of corporate network services within the region. Continuous efforts are being made to develop new services utilizing existing platforms and establishing commercial agreements with foreign telecommunications administrations to support new endeavors in the Americas.

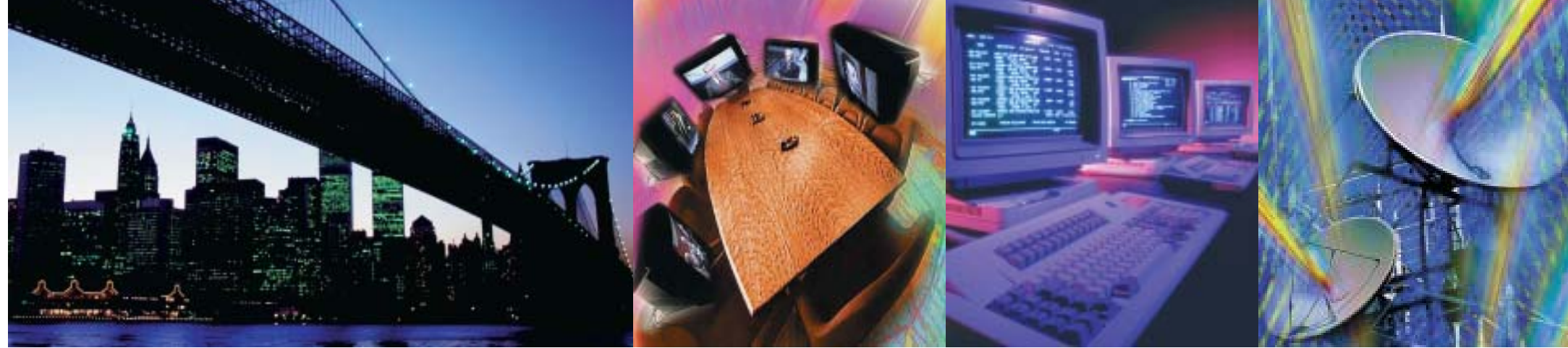


Americatel[®]

Americatel Corporation
4045 NW 97 Avenue
Miami, Florida 33178 USA
(305) 716-8700 phone
(305) 994-7294 fax
www.americatel.net



Frame Relay
comes to Latin America



Frame Relay

AMERICATEL'S Frame Relay services in Latin America and the Caribbean are designed to support the current and future telecommunications requirements of multinational corporations in the region. Frame Relay delivers unprecedented capabilities to meet most data, voice, and video communications needs with a cost-performance ratio superior to existing services in the region. Americatel's aggressive Frame Relay deployment strategy will ensure service availability in both large and small countries.

In all cases, Americatel is responsible for the end-to-end management of the service, providing a single point of contact for all issues regarding the service. Our flexibility in delivering solutions to our customers is reflected in the customized Frame Relay service plans we offer. Americatel customers can rest assured that our comprehensive end-to-end approach will give them the reliability and performance they need.

The transport of Frame Relay traffic in each country, including the US, is performed by leading

Frame Relay providers. These Americatel partners provide local support, management and maintenance to customers, fulfilling their specific needs. Americatel personnel are dedicated to service and oriented exclusively toward attaining the highest possible levels of customer satisfaction. Our commitment to our Frame Relay clients throughout Latin America and the Caribbean is quickly becoming one of the best examples of this dedication.

Network specs

FRAME RELAY is offered throughout the region at port speeds ranging from 64 Kbps to 2.048 Mbps, with a minimum Committed Information Rate (CIR) per Permanent Virtual Circuit (PVC) of 16 Kbps. Each Frame Relay circuit is routed via Americatel's international gateway through our teleport facilities in Miami, Florida,

to Latin America and the Caribbean using highly reliable, state-of-the-art digital satellite or submarine fiber optic technology.

The management of Frame Relay circuits is performed using the latest technology to monitor PVCs end-to-end, regardless of the administrative boundaries of networks being used. Americatel's network operating center is staffed by multilingual technicians 24 hours a day, seven days a week, including holidays, who manage, monitor and troubleshoot when necessary.

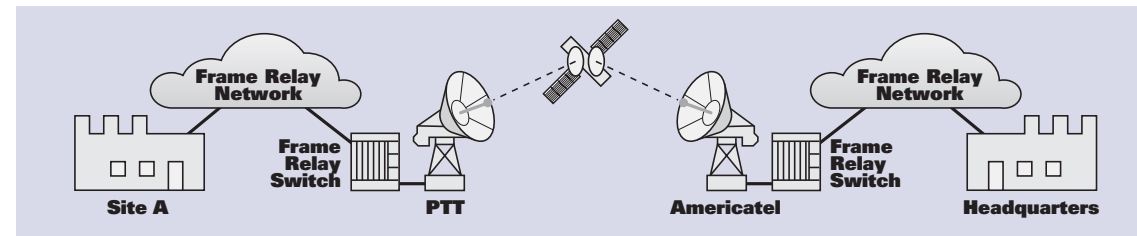
Benefits

FRAME RELAY is the leading service in cost-performance for private data communications networks. There has never been a service that can meet the requirements of the latest applications with the performance levels of dedicated leased lines at a fraction of the cost.

Frame Relay's flexibility in terms of bandwidth and connectivity, provides solutions for a variety of corporate environments and business needs. All the information that today resides in distributed LANs may now be readily available company-wide. Frame Relay was designed to satisfy

the performance profile of these applications. If centralization of information is a business driver or the distribution of information is the desired business mode of operation, Frame Relay is the solution. With such advanced capabilities and cost-effective performance, Frame Relay technology is certain to continue satisfying corporate communications requirements for many years to come for the following applications:

- LAN interconnection
- Alternative networking solutions
- Workgroup applications
- Corporate intranets
- Voice and video.



Frame relay

